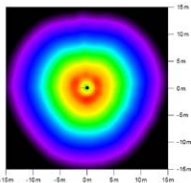


post top luminaire ADAM III/R U LED

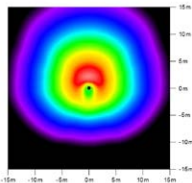
CE | Ⓢ | □ | EN 60598-2-3 | IP 65 | 220V – 240V / 50Hz – 60Hz



total height: 2.50m – 5.00m
 light standards: low and medium lighting requirements
 lamp: incl. 1 glare-free U LED module
 inrush current: 0,03A only
 surge protection: 2x 20kV
 colour temperature: 3.000K warm white or 4.000K neutral white
 LED gear: electronic driver, up to 50.000 hours, high efficiency factor of 94%, with soft start function and Constant Light Output (CLO) in order to keep the luminous flux the same over the entire life time
 LED life expectancy: up to 60.000 hours/L100/B0,25 with CLO resp. 110.000 hours/L80/B0,5 without CLO for minimum maintenance costs due to an excellent thermal management
 light control: at extra cost: dimming; power reduction; external change of dim settings subsequently or CLEVER LIGHT
 optical system: louvre system with vertically mounted lamps for wide spacings; with extra inner laying satined anti-glare tube
 light distribution: symmetrical, asymmetrical or asymmetrical with back shield
 luminaire head: cap made of aluminium; with a special white, reflective underside finish; base made of corrosion-resistant cast aluminium; powder coated
 colour: DB 703; other RAL or DB colour without extra cost on request
 glazing: PMMA RESIST, clear, high-impact resistant
 wiring: completely wired; via a plug and socket connector outside the luminaire head
 installation: for post top ø 60mm or ø 76mm
 accessory: column, pole accessories – to be ordered separately
 application areas: residential and local distributor roads, car parks, schools, hotels, factory premises, paths, squares, parks

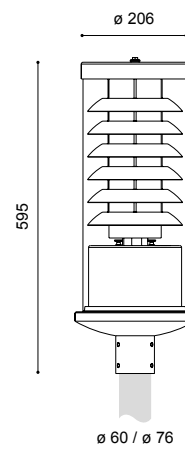


symmetrical
height: 4.50m; area: 30m x 30m



asymmetrical
height: 4.50m; area: 30m x 30m

lamp	kg	product code
symmetrical, ø 76mm		
U LED 11W/2.000lm/3.000K	7,7	4.612.9024.07-24
U LED 15W/3.000lm/3.000K	7,7	4.612.9033.07-24
U LED 21W/4.000lm/3.000K	7,7	4.612.9044.07-241
U LED 12W/2.000lm/4.000K	7,7	4.612.9022.07-24
U LED 17W/3.000lm/4.000K	7,7	4.612.9433.07-24
U LED 19W/4.000lm/4.000K	7,7	4.612.9045.07-241
asymmetrical		4.612.xxxx.0x-44(1)
asymmetrical with back shield		4.612.xxxx.0x-34(2)
ø 60mm		4.612.xxxx.05-x4(2)
power reduction without pilot-line, dimming level and time according to customer's request		4.612.xxxx.xx-P-xx(1)
power reduction with pilot-line, dimming level and logic according to customer's request		4.612.xxxx.xx-xx(1)SDU



class II – at extra cost (add "S" at the end)

Technical specifications are subject to change without notice. 06.2025

