

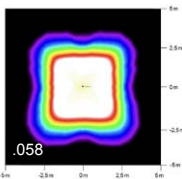
bollard

# IMKE P I DA LED

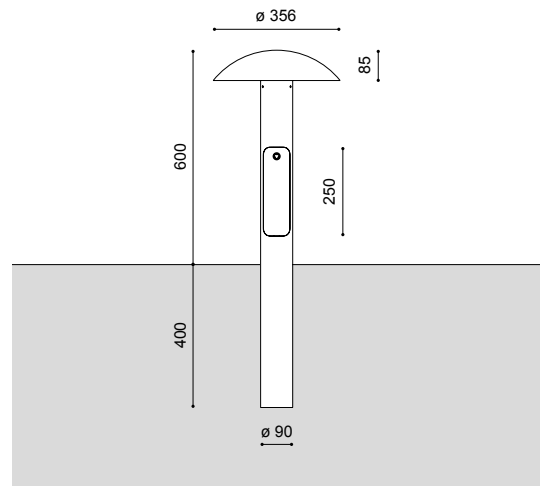
CE | Ⓢ | Ⓜ | EN 60598-2-3 | IP 65 | IK 09 | 220V – 240V / 50Hz – 60Hz



- total height: 600mm
- light standards: for low lighting requirements
- lamp: incl. 4 DA (2x2) LED module; easy to replace
- colour temperature: 3,000K warm white or 4,000K neutral white
- surge protection: 6kV
- LED gear: electronic driver; up to 100.000; driver with Constant Light Output (CLO) in order to keep the luminous flux at the same level over the entire life time
- LED life expectancy: up to 100.000, 50.000 hours/ L 100 for minimum maintenance costs due to an excellent thermal management
- light control: at extra cost: dimming
- optical system: directed light (multi layer) provided by an exchangeable, anti-aging lens technology
- light distribution: symmetrical
- luminaire body: luminaire head and tube with door for cable junction box made of aluminium; powder coated
- colour: DB 703; other RAL or DB colour without extra cost on request
- glazing: PMMA RESIST, clear, high-impact resistant
- wiring: completely wired; cable junction box for max. 2 cables up to 5x10mm<sup>2</sup> / 3 cables up to 5x6mm<sup>2</sup>
- installation: with root to be set into the ground
- accessory: back light shield for no glare on the rear side – to be ordered separately
- application areas: parkways, private areas, small squares, boulevards, schools, home for elderly people, hotels, factory premises, main streets, parks, pedestrian zones



symmetrical



lamp	kg	product code
DA+ 2x2/058 LED 13W/2.200lm/3.000K <sup>(4)</sup>	7,6	9.057.9403.01058E-3
DA+ 2x2/058 LED 13W/2.300lm/4.000K <sup>(4)</sup>	7,6	9.057.9403.01058E

accessory:	kg	product code
back light shield for DA lenses <b>LS DA 1</b>	0,01	2.914.8301.17

<sup>(4)</sup> 4 modules  
class II at extra cost (add "S" at the end)

Technical specifications are subject to change without notice. 10.2024

