

post top luminaire MORITZ F VIII DA LED

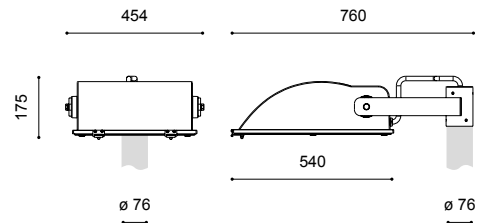
CE | Ⓢ | □ | EN 60598-2-3 | IP 65 | IK 10 | 220V – 240V / 50Hz – 60Hz

Zhaga



- recom. pole height: 4.50 – 12.00m
- light standards: low, medium and high lighting requirements
- lamp: incl. 2 up to 4 DA+ (2x8) LED modules, easy to replace
- colour temperature: 4,000K neutral white or 3,000K warm white
- surge protection: 10kV
- LED gear: incl. 4DIM driver, up to 100,000 hours; driver with integrated Constant Light Output (CLO) in order to keep the luminous flux at the same level over the entire life time; AC/DC compatible for operation with central battery systems
- LED life expectancy: 65,000 hours/ L100/ B10; 100,000 hours/ L90 /B10 for minimum maintenance costs due to an excellent thermal management
- light control: at extra cost: power reduction, dimming or CLEVER LIGHT
- optical system: directed light (multi layer) provided by an exchangeable, anti-aging lens technology
- light distribution: [street optics](#), [square optics](#), [area optics](#), [cycle path optics](#), [pedestrian crossing optics](#) – see next page
- luminaire head: steplessly adjustable, made of die cast aluminium with short bracket made of hot dip galvanised steel; powder coated; incl. stainless steel hose for cable protection
- colour: RAL or DB colour
- glazing: clear toughened glass glazing, to be hinged down
- wiring: luminaire head completely wired; via a clamp within the luminaire head
- installation: for top entry \varnothing 76mm
- accessory: cable, cable junction box, pole with pole accessories, back light shield for non-glare on the rear side – to be ordered separately
- application areas: parkways, schools, home for elderly people, hotels, squares, factory premises, car parks

lamp	kg	product code
DA+ (2x8) LED 23W/4,200lm/4,000K ⁽²⁾	26,4	9.213.8215.01xxx
DA+ (2x8) LED 27W/4,800lm/4,000K ⁽²⁾	26,4	9.213.8218.01xxx
DA+ (2x8) LED 34W/6,000lm/4,000K ⁽²⁾	26,4	9.213.8224.01xxx
DA+ (2x8) LED 45W/7,600lm/4,000K ⁽²⁾	26,4	9.213.8228.01xxx
DA+ (2x8) LED 34W/6,300lm/4,000K ⁽³⁾	27,0	9.213.8315.01xxx
DA+ (2x8) LED 40W/7,200lm/4,000K ⁽³⁾	27,0	9.213.8318.01xxx
DA+ (2x8) LED 52W/9,000lm/4,000K ⁽³⁾	27,0	9.213.8324.01xxx
DA+ (2x8) LED 67W/11,400lm/4,000K ⁽³⁾	27,0	9.213.8328.01xxx
DA+ (2x8) LED 46W/8,400lm/4,000K ⁽⁴⁾	28,0	9.213.8415.01xxx
DA+ (2x8) LED 54W/9,600lm/4,000K ⁽⁴⁾	28,0	9.213.8418.01xxx
DA+ (2x8) LED 69W/12,000lm/4,000K ⁽⁴⁾	28,0	9.213.8424.01xxx
DA+ (2x8) LED 90W/15,200lm/4,000K ⁽⁴⁾	28,0	9.213.8428.01xxx
DA+ (2x8) LED 23W/4,000lm/3,000K ⁽²⁾	26,4	9.213.8215.01xxx-3
DA+ (2x8) LED 27W/4,600lm/3,000K ⁽²⁾	26,4	9.213.8218.01xxx-3
DA+ (2x8) LED 35W/5,800lm/3,000K ⁽²⁾	26,4	9.213.8224.01xxx-3
DA+ (2x8) LED 47W/7,400lm/3,000K ⁽²⁾	26,4	9.213.8228.01xxx-3
DA+ (2x8) LED 35W/6,000lm/3,000K ⁽³⁾	27,0	9.213.8315.01xxx-3
DA+ (2x8) LED 41W/6,900lm/3,000K ⁽³⁾	27,0	9.213.8318.01xxx-3
DA+ (2x8) LED 53W/8,700lm/3,000K ⁽³⁾	27,0	9.213.8324.01xxx-3
DA+ (2x8) LED 70W/11,100lm/3,000K ⁽³⁾	27,0	9.213.8328.01xxx-3
DA+ (2x8) LED 47W/8,000lm/3,000K ⁽⁴⁾	28,0	9.213.8415.01xxx-3
DA+ (2x8) LED 55W/9,200lm/3,000K ⁽⁴⁾	28,0	9.213.8418.01xxx-3
DA+ (2x8) LED 71W/11,600lm/3,000K ⁽⁴⁾	28,0	9.213.8424.01xxx-3
DA+ (2x8) LED 94W/14,800lm/3,000K ⁽⁴⁾	28,0	9.213.8428.01xxx-3



power reduction without pilot-line, dimming level and time according to customer's request 9.213.xxxx.01xxx(-3)-93

power reduction with pilot-line, dimming level and logic according to customer's request 9.213.xxxx.01xxx(-3)-94

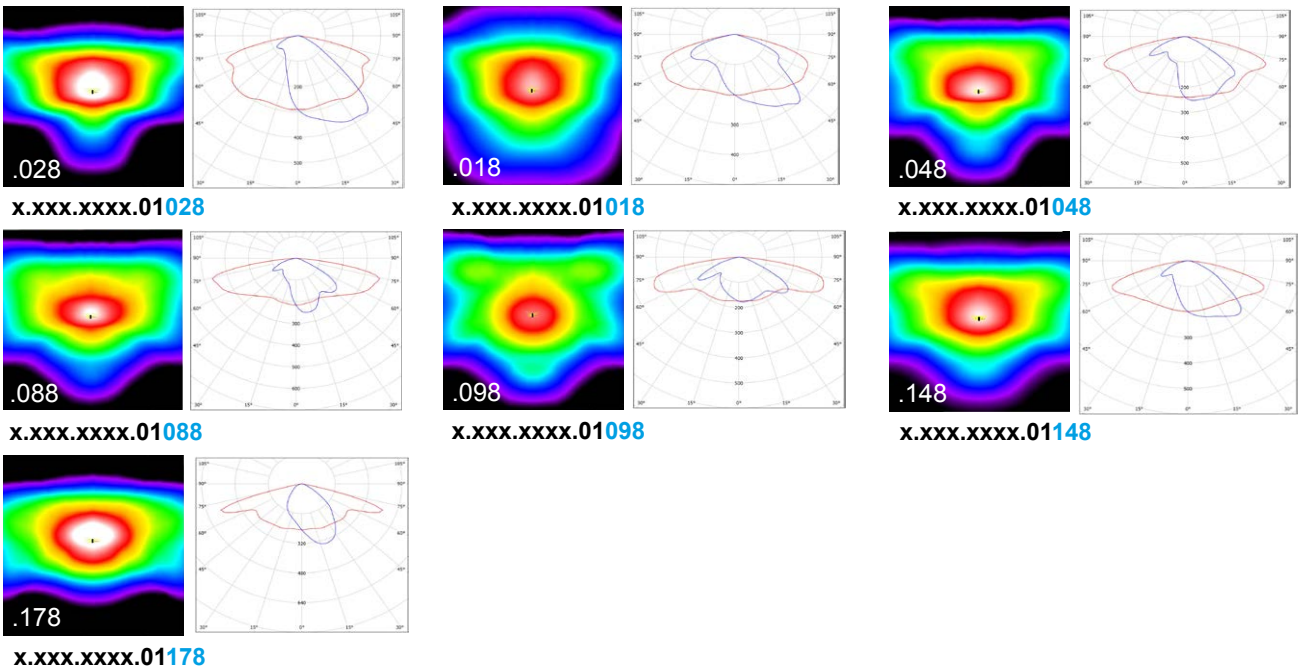
accessory:
backlight shield **LS DA 1** 0.01 2.914.8301.17

(2) 2 modules / (3) 3 modules / (4) 4 modules
class II at extra cost (add "S" at the end)

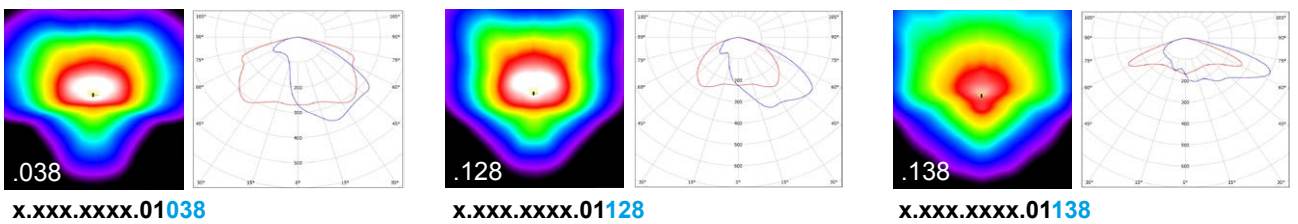
Technical specifications are subject to change without notice. 09.2022



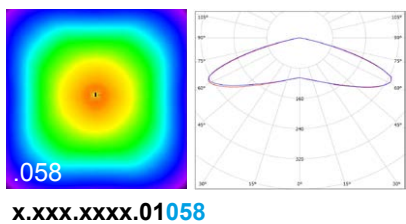
street optics (2x8)
asymmetrical wide beam / asymmetrical deep wide beam



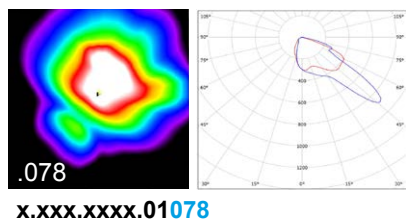
area optics (2x8)
asymmetrical deep wide beam / asymmetrical



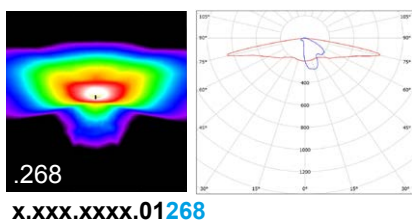
square optics (2x8)
symmetrical



pedestrian crossing optics (2x8)
right beam



cycle path optics (2x4)
narrow and wide beam



other DA LED module – other performance,
see data sheet separately

Technical specifications are subject to change without notice. 09.2022

