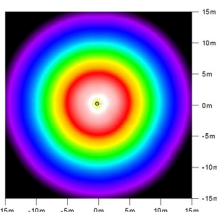


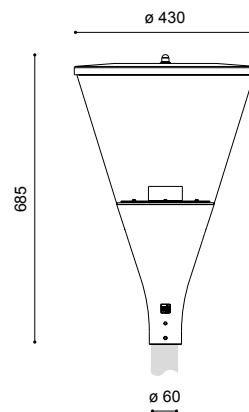
# post top luminaire NOA I LSL LED



- recom. pole height: 3.00m – 6.00m
- light standards: low and medium lighting requirements
- lamp: incl. 1 LSL LED module
- colour temperature: 3,000K warm white or 4,000K neutral white
- surge protection: 10kV
- LED gear: incl. 4DIM driver, up to 100,000 hours; driver with integrated Constant Light Output (CLO) in order to keep the luminous flux at the same level over the entire life time; suitable for emergency systems (driver AC/ DC compatible)
- LED life expectancy: 50,000 hours/ L100/ B10 for minimum maintenance costs due to an excellent thermal management
- light control: at extra cost: power reduction or dimming
- optical system: directed light provided by reflector technology in conjunction with a flat intergrated aluminium reflector on top
- light distribution: symmetrical
- luminaire head: incl. canopy  $\varnothing$  430mm made of aluminium; base made of corrosionresistant cast aluminium, powder coated
- colour: DB 703; other RAL or DB colour without extra cost on request
- glazing: PMMA RESIST, clear, high-impact resistant
- wiring: completely wired; with 2 x 0.75 mm<sup>2</sup> flying leads, 3.00 m cable length, with Euro plug
- installation: for post top  $\varnothing$  60mm
- accessory: cable, pole, pole accessories – to be ordered separately
- application areas: residential and local distribution roads, car parks, schools, hotels, factory premises, paths, squares, parks



symmetrical  
height: 3.50m, area: 30m x 30m



lamp	kg	product code
LSL LED 33W/5,100lm/3,000K	12.0	9.047.9098.71-3
LSL LED 33W/5,460lm/4,000K	12.0	9.047.9098.71

power reduction without pilot-line, dimming level and time according to customer's request 9.047.9098.71(-3)-93

power reduction with pilot-line, dimming level and logic according to customer's request 9.047.9098.71(-3)-94

class II – at extra cost (add "S" at the end)

Technical specifications are subject to change without notice. 05.2026

