

post luminaire

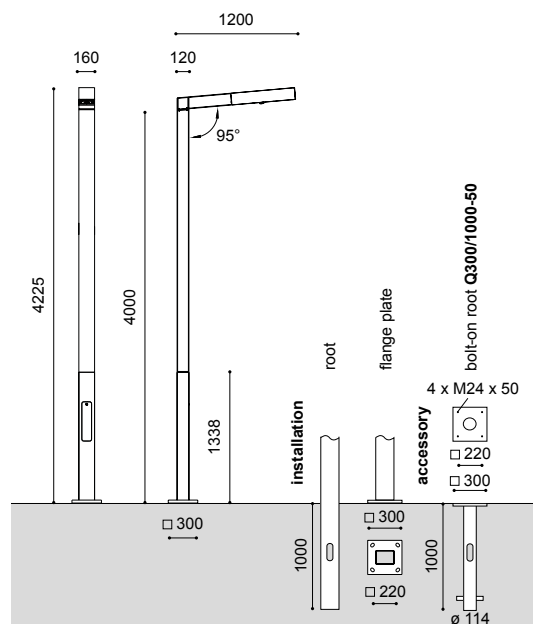
PABO I DA LED ZS

with Zhaga socket



- total height: 4.00m (other heights on request)
- light standards: Imedium and high lighting requirements
- lamp: incl. 1 DA+ (2x8) LED module
- colour temperature: 3,000K warm white or 4,000K neutral white
- surge protection: 10kV
- LED gear: incl. programmable, Zhaga Book18 compliant and D4i-certified 2-channel driver with SR-/DALI-/NFC interface and data communication, in combination with 1 standardised Zhaga socket on the underside, as well as integrated „Constant Light Output“ (CLO) function to keep the luminous flux of the LEDs constant over the entire useful life (up to 100,000 hours / B10)
- LED life expectancy: 65,000 hours/ L100/ B10; 100,000 hours/ L90 /B10 for minimum maintenance costs due to an excellent thermal management
- light control: at extra cost: dimming, power reduction; future-proof Zhaga socket on the bottom, suitable for retrofitting the luminaire with Hub light control systems, e.g. CLEVER LIGHT
- optical system: directed light (multi layer) provided by an exchangeable, anti-aging lens technology
- light distribution: [street optics](#), [area optics](#), [cycle path optics](#), [pedestrian crossing optics](#) – see next page
- luminaire body: made of rectangular aluminum profile an additional special profile with access door for cable junction box, bracket with 5° tilt; powder coated
- colour: DB 703; other RAL or DB colour without extra cost on request
- glazing: flat, clear toughened glass glazing
- wiring: completely wired; incl. cable until access door
- installation: with flange plate to be screwed on a concrete foundation on site or on an additional bolt-on root or with root to be set into the ground
- accessory: cable junction box, back light shield for non- glare on the rear side, bolt-on root with screws – to be ordered separately
- application areas: boulevards, schools, home for elderly people, hotels, factory premises, main streets, residential and local distributor roads, squares, parks, pedestrian zones, car parks

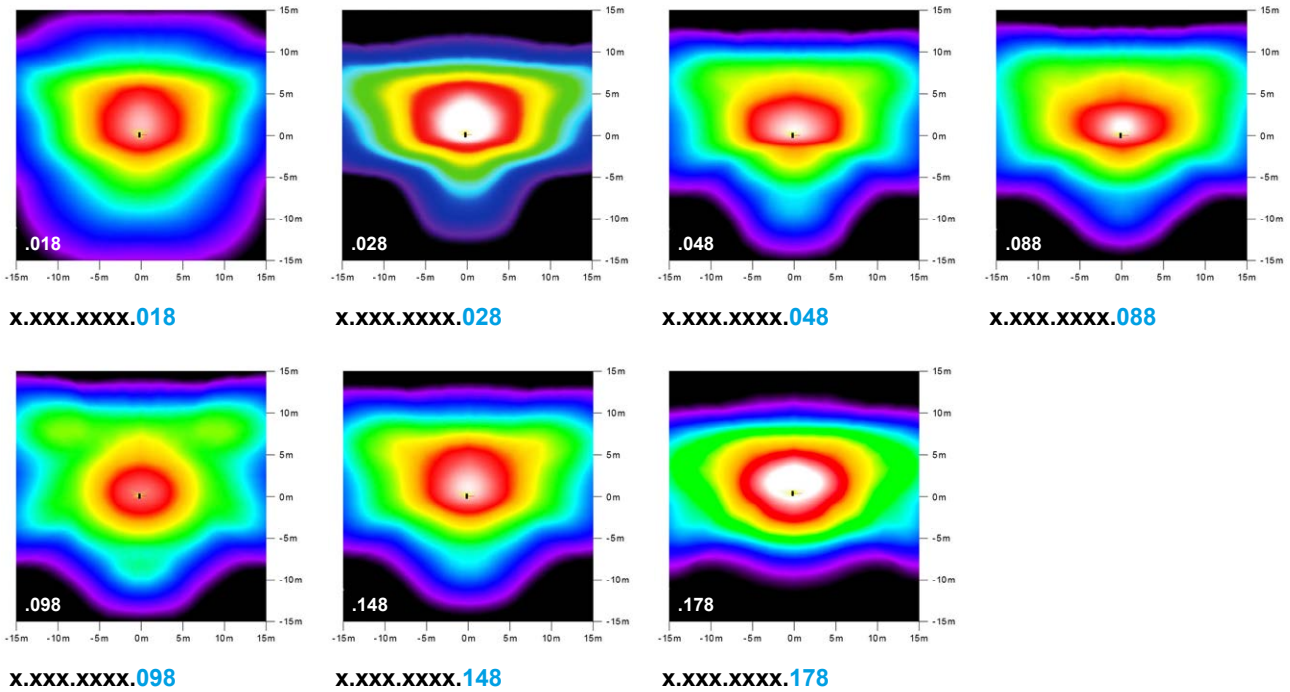
lamp	kg	product code
with root		
DA+ (2x8) LED 11W/2,100lm/4,000K	54.0	9.215.8115.125PBxxxE-ZSu
DA+ (2x8) LED 13W/2,400lm/4,000K	54.0	9.215.8118.125PBxxxE-ZSu
DA+ (2x8) LED 17W/3,000lm/4,000K	54.0	9.215.8124.125PBxxxE-ZSu
DA+ (2x8) LED 22W/3,800lm/4,000K	54.0	9.215.8128.125PBxxxE-ZSu
DA+ (2x8) LED 12W/2,000lm/3,000K	54.0	9.215.8115.125PBxxx-3E-ZSu
DA+ (2x8) LED 14W/2,300lm/3,000K	54.0	9.215.8118.125PBxxx-3E-ZSu
DA+ (2x8) LED 18W/2,900lm/3,000K	54.0	9.215.8124.125PBxxx-3E-ZSu
DA+ (2x8) LED 23W/3,700lm/3,000K	54.0	9.215.8128.125PBxxx-3E-ZSu
with flange plate		9.215.xxxx.125PBxxx(-3)F-ZSu
power reduction without pilot-line, dimming level and time according to customer's request		9.215.xxxx.125PBxxx(-3)x-93-ZSu
power reduction with pilot-line, dimming level and logic according to customer's request		9.215.xxxx.125PBxxx(-3)x-94-ZSu
accessory:		
bolt-on root – hot dip galvanised steel		
Q300/1000-50	14.5	9.900.0019.00-50
back light shield		
LS DA 1	0.01	2.914.8301.17



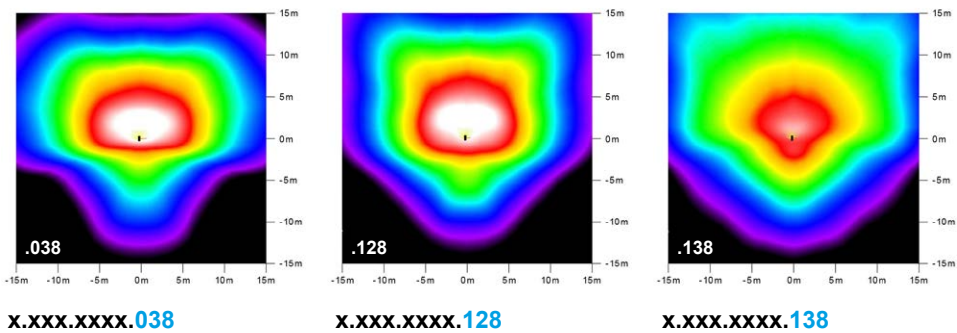
class II at extra cost (add "S" at the end)

Technical specifications are subject to change without notice. 03.2026

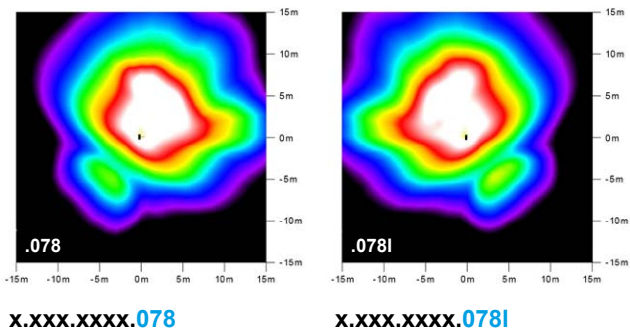
street optics (2x8)
asymmetrical wide beam / asymmetrical deep wide beam



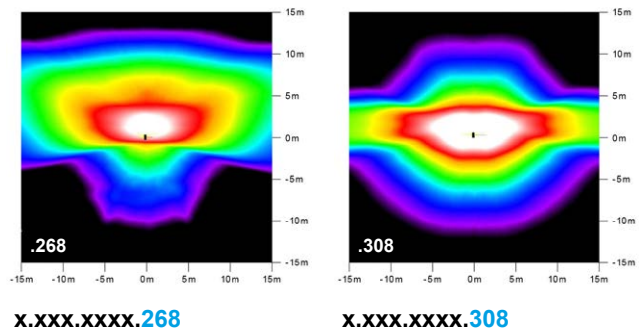
area optics (2x8)
asymmetrical deep wide beam / asymmetrical



pedestrian crossing optics (2x8)
right beam / left beam



cycle path optics (2x4*)
narrow and wide beam



*other DA LED module – other performance, data sheet on request

Technical specifications are subject to change without notice. 03.2026

