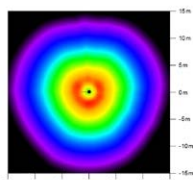


post top luminaire

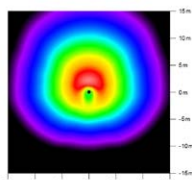
RICHARD VIII/R U LED



- total height: 4.00m – 6.00m
- light standards: low and medium lighting requirements
- lamp: incl. 1 glare-free U LED module
- inrush current: 0,03A only
- surge protection: 2x 20kV
- colour temperature: 3.000K warm white or 4.000K neutral white
- LED gear: electronic driver, up to 50.000 hours, high efficiency factor of 94%, with soft start function and Constant Light Output (CLO) in order to keep the luminous flux the same over the entire life time
- LED life expectancy: up to 60.000 hours/L100/B0,25 with CLO resp. 110.000 hours/L80/B0,5 without CLO for minimum maintenance costs due to an excellent thermal management
- light control: at extra cost: dimming; power reduction; external change of dim settings subsequently or CLEVER LIGHT
- optical system: louvre system with vertically mounted lamps for wide spacings; with extra inner laying satined anti-glare tube
- light distribution: symmetrical, asymmetrical or asymmetrical with back shield
- luminaire head: canopy made of aluminium; base made of corrosion-resistant cast aluminium; powder coated
- colour: DB 703; other RAL or DB colour without extra cost on request
- glazing: PMMA RESIST, clear, high-impact resistant
- wiring: completely wired; via a plug and socket connector outside the luminaire head
- installation: for post top \varnothing 60mm or \varnothing 76mm
- accessory: column, pole accessories – to be ordered separately
- application areas: residential and local distributor roads, car parks, schools, hotels, factory premises, paths, squares, parks
- product family: additionally deliverable: bollards, bollards column, wall luminaire



symmetrical
height: 4.50m; area: 30m x 30m



asymmetrical
height: 4.50m; area: 30m x 30m

lamp	kg	product code
------	----	--------------

1 bracket, symmetrical light distribution, \varnothing 60mm		
U LED 11W/2,000lm/3,000K	10,5	4.892.9024.157-24
U LED 15W/3,000lm/3,000K	10,5	4.892.9033.157-24
U LED 21W/4,000lm/3,000K	10,5	4.892.9044.157-241
U LED 12W/2,000lm/4,000K	10,5	4.892.9022.157-24
U LED 17W/3,000lm/4,000K	10,5	4.892.9433.157-24
U LED 19W/4,000lm/4,000K	10,5	4.892.9045.157-241

asymmetrical light distribution	4.892.xxxx.157-4(xx)
asym. light distribution + back shield	4.892.xxxx.157-3(xx)
\varnothing 76mm	4.892.xxxx.187-x(xx)
other RAL or DB colour	4.892.xxxx.xxx-x(xx)-RD

power reduction without pilot-line, dimming level and time according to customer's request 4.892.xxxx.xxx-P-x(xx)

power reduction with pilot-line, dimming level and logic according to customer's request 4.892.xxxx.xxx-x(xx)-SDU

class II – at extra cost (add "S" at the end)

Technical specifications are subject to change without notice. 01.2026

