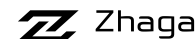


luminous column



# STELLA L V/10 DA LED



total height: 4.00m (other heights on request)  
 light standards: for low and medium lighting requirements  
 lamp: incl. 1 DA LED module, easy to replace  
 colour temperature: 3,000K warm white or 4,000K neutral white  
 surge protection: 10kV  
 LED gear: incl. driver, up to 100,000 hours; with integrated Constant Light Output (CLO) in order to keep the luminous flux at the same level over the entire life time; AC/DC compatible for emergency  
 LED life expectancy: 65,000 hours/ L100/ B10; 100,000 hours/ L90/ B10 for minimum maintenance costs due to an excellent thermal management  
 light control: at extra cost: power reduction, dimming, DALI or CLEVER LIGHT  
 optical system: directed light (multi layer) provided by an exchangeable, anti-aging lens technology  
 light distribution: [street optics](#), [square optics](#), [area optics](#), [cycle path optics](#), [pedestrian crossing optics](#) – see next page  
 luminaire head: with cap made of aluminium; powder coated  
 luminaire body: straight tubular column made of aluminium with access door for cable junction box; powder coated DB 703; other RAL or DB colour without extra cost on request  
 colour:  
 glazing: PMMA RESIST, clear, high-impact  
 wiring: ready wired; incl. cable until access door  
 installation: tube with flange plate to be screwed on a concrete foundation on site or on an additional bolt-on root or with root to be set into the ground  
 accessories: pole accessories, bolt-on root, foundation, accessory ring or cable junction box – to be ordered separately  
 application areas: promenades, parkways, boulevards, schools, home for elderly people, hotels, factory premises, residential and local distributor roads, paths, cycle lanes, squares, car parks, pedestrian zones

lamp	kg	product code
DA+ (2x4) LED 6W/1.100lm/3.000K	36,0	9.628.8107.67xxx-3ALB
DA+ (2x4) LED 7W/1.250lm/3.000K	36,0	9.628.8110.67xxx-3ALB
DA+ (2x4) LED 10W/1.600lm/3.000K	36,0	9.628.8112.67xxx-3ALB
DA+ (2x4) LED 13W/2.000lm/3.000K	36,0	9.628.8127.67xxx-3ALB
DA+ (2x4) LED 6W/1.150lm/4.000K	36,0	9.628.8107.67xxxALB
DA+ (2x4) LED 7W/1.300lm/4.000K	36,0	9.628.8110.67xxxALB
DA+ (2x4) LED 9W/1.650lm/4.000K	36,0	9.628.8112.67xxxALB
DA+ (2x4) LED 12W/2.050lm/4.000K	36,0	9.628.8127.67xxxALB

power reduction without pilot-line, dimming level and time according to customer's request 9.628.xxxx.677.xxx(-3)ALA-93

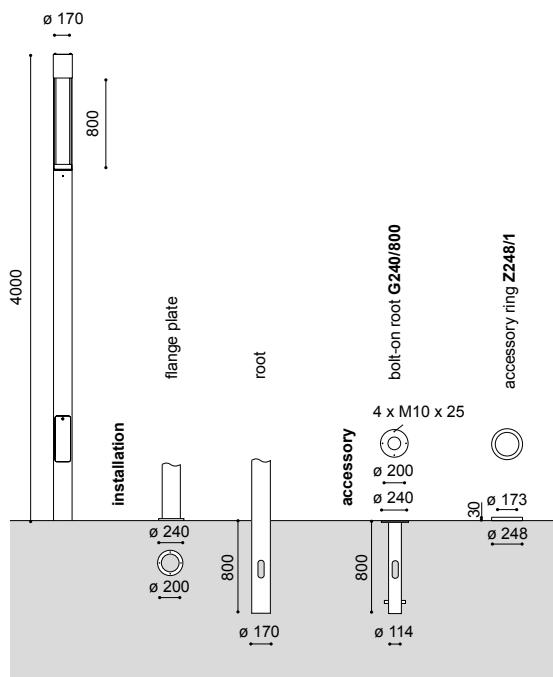
power reduction with pilot-line, dimming level and logic according to customer's request 9.628.xxxx.677.xxx(-3)ALA-94

**accessory:**

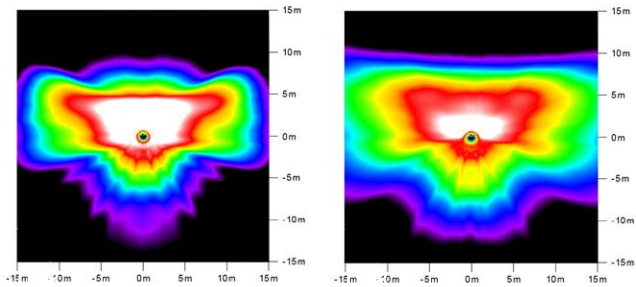
bolt-on root – hot dip galvanised steel, incl. screws		
<b>G240/800</b>	9,6	9.900.0012.00L
accessory ring – stainless steel, powder coated		
<b>Z248/1</b>	0,8	9.900.0008.70

class II – at extra cost (add "S" at the end)

Technical specifications are subject to change without notice. 01.2024



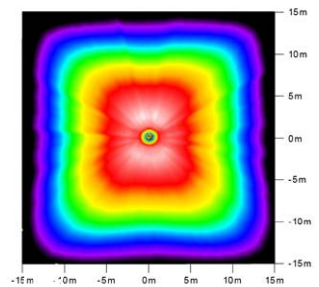
**street optics (2x4)**  
asymmetrical wide beam



X.XXX.XXXX.XX028

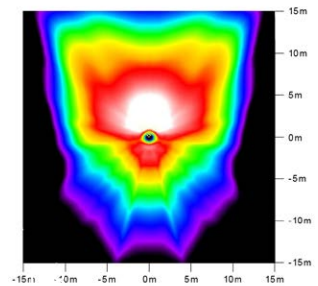
X.XXX.XXXX.XX088

**square optics (2x4)**  
symmetrical



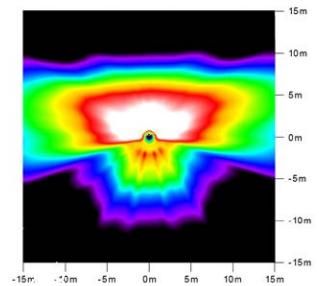
X.XXX.XXXX.XX058

**area optics (2x4)**  
asymmetrical deep wide beam



X.XXX.XXXX.XX138

**cycle path optics (2x4)**  
narrow and wide beam



X.XXX.XXXX.XX268

Technical specifications are subject to change without notice. 00.2023

