

post top luminaire

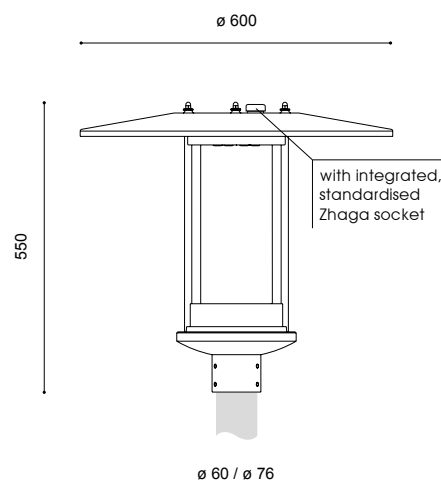
TORSTEN III DA LED ZS

with Zhaga socket



- recom. pole height: 3.00m – 5.00m
- light standards: for medium lighting requirements
- lamp: inkl. 2 DA+ (2x4) LED modules
- colour temperature: 3.000K warm white or 4.000K neutral white
- surge protection: 10kV
- LED gear: incl. programmable, Zhaga Book18 compliant and D4i-certified driver with SR interface and data communication, in combination with 1 piece of standardised Zhaga socket at the top, as well as integrated „Constant Light Output“ (CLO) function to keep the luminous flux of the LEDs constant over the entire Useful life (up to 100,000 hours / B10)
- LED life expectancy: 65,000 hours/ L100/ B10; 100,000 hours/ L90 /B10 for minimum maintenance costs due to an excellent thermal management
- light control: at extra cost: power reduction, dimming, future-proof Zhaga socket: suitable for retrofitting the luminaire with Hub light control systems, e.g. CLEVER LIGHT or CityTouch Ready, i.a.
- optical system: directed light (multi layer) provided by an exchangeable, anti-aging lens technology
- light distribution: [street optics](#), [area optics](#), [square optics](#), [cycle path optics](#) – see next page
- luminaire head: canopy made of aluminium with a special white, reflective underside finish, base made of corrosion-resistant cast aluminium; powder coated
- colour: RAL or DB
- glazing: PMMA RESIST, clear, high-impact
- wiring: via a plug and socket connector outside the luminaire head; easy installation
- installation: for top entry \varnothing 60mm or \varnothing 76mm
- accessory: column, cable, pole accessories, light shut for non-glare on the rear side (equipped with max. 4 per luminaire) - to be ordered separately
- application areas: for parkways, boulevards, schools, home for elderly people, hotels, factory premises, residential and local distribution roads, paths, cycle lanes, squares, car parks, shopping center, pedestrian zones

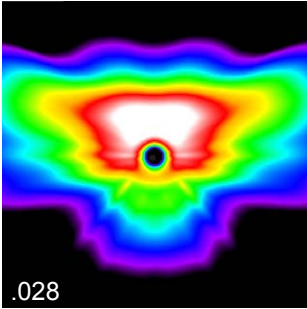
lamp	kg	product code
for top entry \varnothing 76mm		
DA+ (2x4) LED 13W/2,200lm/3,000K ⁽²⁾	8,9	9.003.8207.17xxx-3-ZSo
DA+ (2x4) LED 15W/2,500lm/3,000K ⁽²⁾	8,9	9.003.8210.17xxx-3-ZSo
DA+ (2x4) LED 20W/3,200lm/3,000K ⁽²⁾	8,9	9.003.8212.17xxx-3-ZSo
DA+ (2x4) LED 26W/4,000lm/3,000K ⁽²⁾	8,9	9.003.8227.17xxx-3-ZSo
DA+ (2x4) LED 12W/2,300lm/4,000K ⁽²⁾	8,9	9.003.8207.17xxx-ZSo
DA+ (2x4) LED 14W/2,600lm/4,000K ⁽²⁾	8,9	9.003.8210.17xxx-ZSo
DA+ (2x4) LED 19W/3,300lm/4,000K ⁽²⁾	8,9	9.003.8212.17xxx-ZSo
DA+ (2x4) LED 25W/4,100lm/4,000K ⁽²⁾	8,9	9.003.8227.17xxx-ZSo
for top entry \varnothing 60mm		9.003.xxxx.15xxx(-3)-ZSo
power reduction without pilot-line, dimming level and time according to customer's request		9.003.xxxx.1xxxx(-3)-ZSo-93
power reduction with pilot-line, dimming level and logic according to customer's request		9.003.xxxx.1xxxx(-3)-ZSo-94
accessory:		
back light shield for DA-Lenses	2.914.8301.17	



⁽²⁾ 2 modules
class II – at extra cost (add "S" at the end)

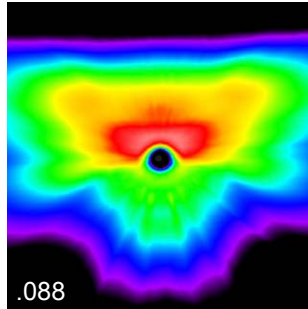
Technical specifications are subject to change without notice. 07.2022

street optics (2x4)
asymmetrical wide beam / asymmetrical deep wide beam



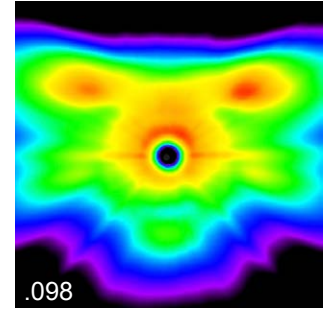
.028

x.xxx.xxxx.xx028



.088

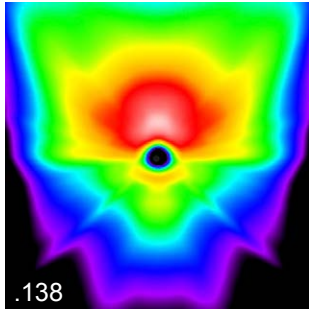
x.xxx.xxxx.xx088



.098

x.xxx.xxxx.xx098

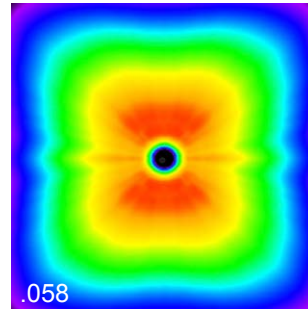
area optics (2x4)
asymmetrical deep wide beam



.138

x.xxx.xxxx.xx138

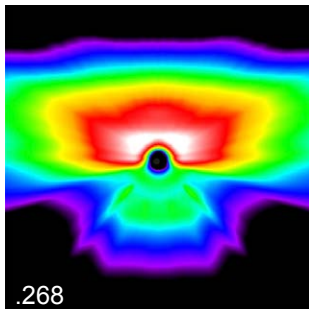
square optics (2x4)
symmetrical



.058

x.xxx.xxxx.xx058

cycle path optics (2x4)
narrow and wide beam



.268

x.xxx.xxxx.xx268

Technical specifications are subject to change without notice. 07.2022

